



**GreenHouse**

+383 45 445 730 / +41 79 225 01 76

[info@greenhouse.immo](mailto:info@greenhouse.immo)

[www.greenhouse.immo](http://www.greenhouse.immo)





# CERTIFIKATË

Sistemi i Menaxhimit sipas  
ISO 9001 : 2015

Ne përpyqim me vlerësimin e TUV NORD CERT, vërtetohet se

**GREENHOUSE SH.P.K.**  
Rruga e Rozhujes, Fshati Radoç  
30060 Pujë  
Kosova



Aplikuar sistemet e menaxhimit ne përpyqim me normat e përmendura për verifikim të sistemit të certifikuar

**Prodhimet dhe ndërtimet i shërbëve të parafabrikuara me kornizë prej druri**

Numri i regjistrit / certifikata 44 100 20 02 0004  
Numri i raportit 15320 0000



Imti (Gërmuesi) i sistemit të certifikuar  
TUV NORD CERT GmbH

Vlefshëm nga 2020-02-03  
Vlefshëm der më 2023-02-02  
Certifikim i punës 2020

Përshkrimi: 2020-02-03

Certifikimi bëhet kryer sipas procedurës të auditimit dhe certifikimi TUV NORD CERT dhe ndërtimet me auditime periodike.

TUV NORD CERT GmbH

Langetransstraße 20

45141 Essen

www.tuv-nord-cert.com






- Respecting the deadlines based on the agreement.

## PARTNERS:



## 4 REASONS WHY YOU SHOULD BUILD WOODEN FRAME HOUSES

### 1- COMFORT AND WELL-BEING

Your wooden house is warm, healthy and free of moisture. Timber frame houses compared to other systems dry more easily, do not create moisture and are warm thus creating a healthy environment.

### 2- ENERGY SAVING

Houses with wooden frames meet the requirements of performance and regulation that is characterized by the lack of thermal bridge that makes up 30% of energy waste of masonry houses. In many studies of timber houses in Ontario (Canada) it has been found that these houses allow significant savings in heat and energy. So, they are very economical long-term!

### 3- ECOLOGICAL APPROACH

The wood used for the construction of the house contributes to sustainable development by affecting the accumulation of CO<sub>2</sub>.

### 4- CONSTRUCTION QUALITY

Wood is a resistant material, and is characterized by great longevity. The half-timbered houses of the historic centers have a lifespan of five centuries. Wood is characterized by elasticity that make it resistant to seismic impacts.

## MATERIALS

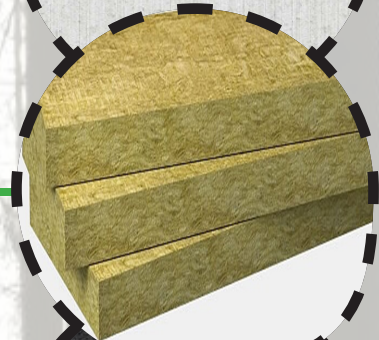
LAMELED WOOD



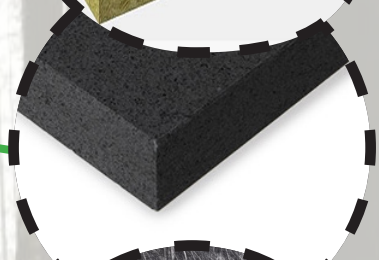
FERMACELL



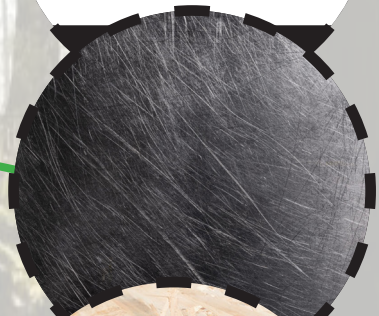
ROCKWOOL



POLYSTYRENE



STEEL



OSB





# CONSTRUCTION



## RESIDENTIAL HOUSE

A home is much more than an investment. It is a space filled with laughter and memories, family dinners, movie nights, sleep stories.

It is a place where your family has the opportunity to thrive and grow. **Green House** ensures that this space is brought to the best of its ability with the most deserving design and plan by combining the most important components within.

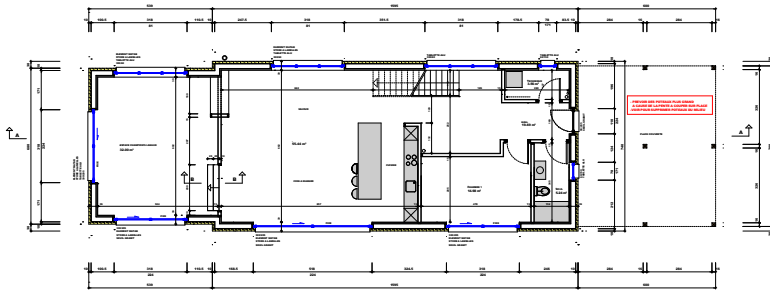
## CONSTRUCTION TYPOLOGIES

1. Individual house
2. Double & in series houses
3. Business facilities
4. Adding floors on top of existing buildings
5. Multi-apartment building

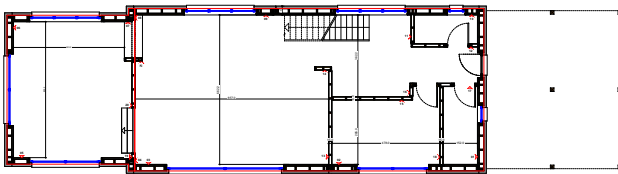




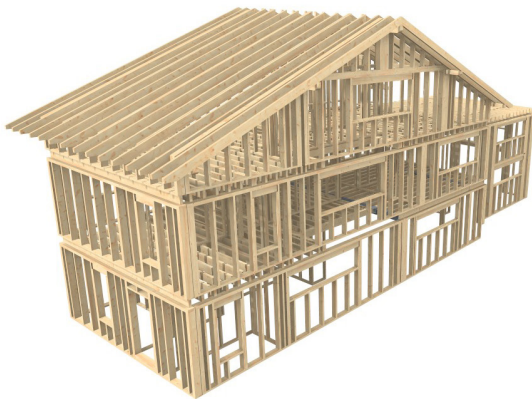
## PROJECT



The received project from the client



Project developed by GREENHOUSE



The isometry of timber construction

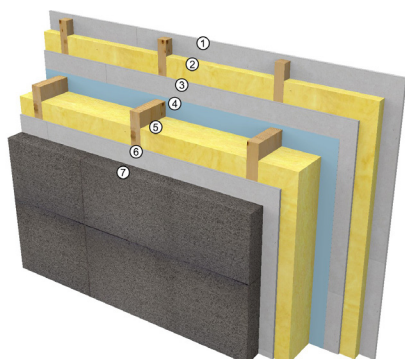


Assembly of prefabricated wooden elements



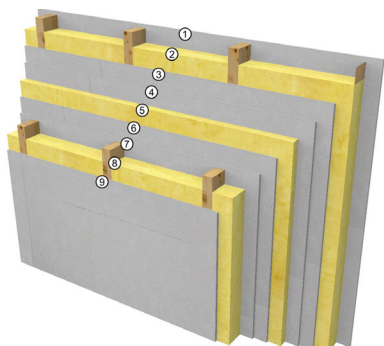
## DETAILS

EXTERNAL WALL



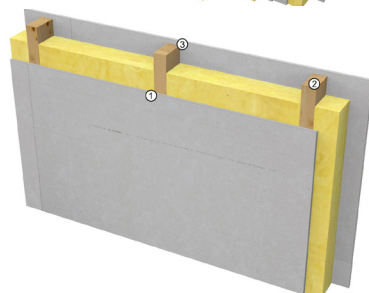
1. GYPSUM FIBER BOARD (FARMACELL) 15mm
2. WOOD LATH 50X50 - GLASS WOOL 50mm
3. GYPSUM FIBER BOARD (FARMACELL) 15mm
4. DIFFUSIVE Layer 0.2mm
5. LAMINATED WOOD STRUCTURE 200mm - GLASS WOOL 200mm
6. GYPSUM FIBER BOARD (FARMACELL) 15mm
7. THERMAL INSULATION - POLYSTYRENE 100mm

PARTITION WALL



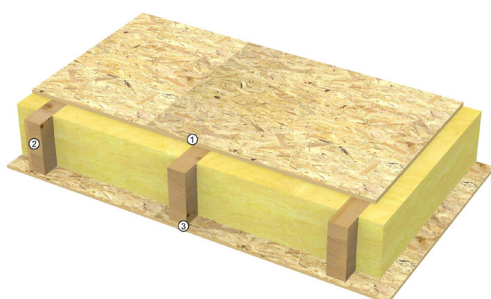
1. GYPSUM FIBER BOARD (FARMACELL) 15mm
2. LAMINATED WOOD STRUCTURE 120mm - GLASS WOOL 120mm
3. GYPSUM FIBER BOARD (FARMACELL) 15mm
4. GYPSUM FIBER BOARD (FARMACELL) 15mm
5. GLASS WOOL 50mm

INTERIOR WALL



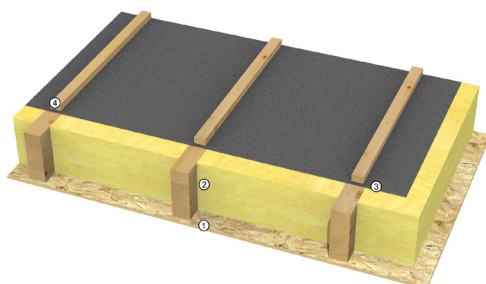
1. GYPSUM FIBER BOARD (FARMACELL) 15mm
2. LAMINATED WOOD STRUCTURE 120mm - GLASS WOOL 120mm
3. GYPSUM FIBER BOARD (FARMACELL) 15mm

SLABS



1. OSB 18mm
2. LAMINATED WOOD STRUCTURE 240mm - GLASS WOOL 240mm
3. OSB 12mm

ROOF



1. OSB 12mm
2. LAMINATED WOOD STRUCTURE 240mm - GLASS WOOL 240mm
3. PROTECTIVE FOIL
4. WOOD LATHS 50X50mm

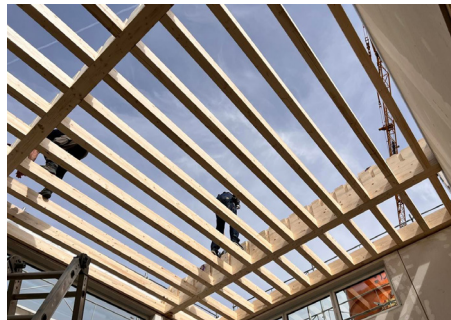
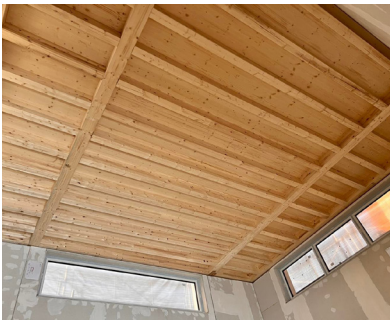
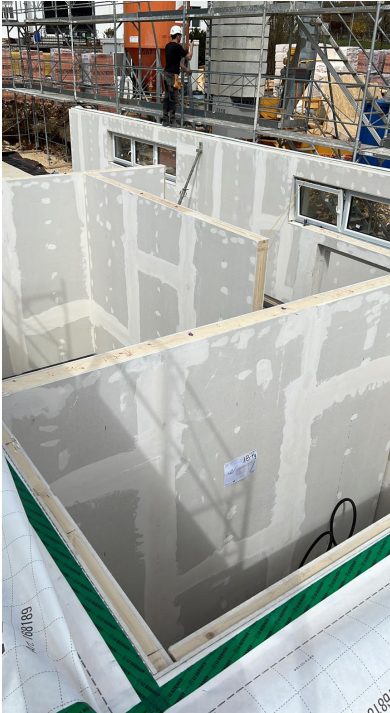
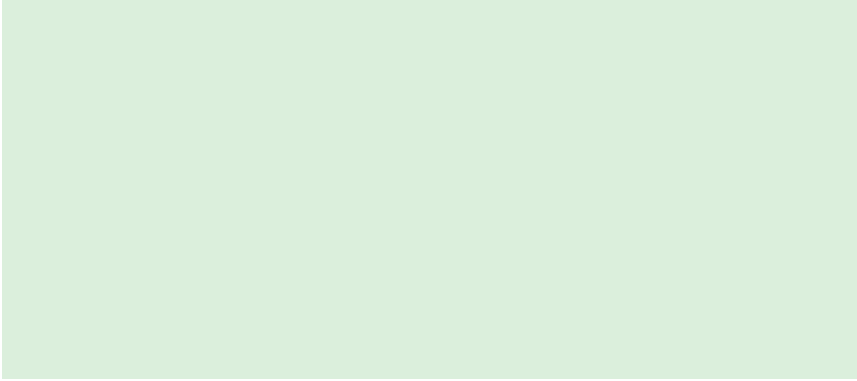


## PRODUCTION





# ASSEMBLY





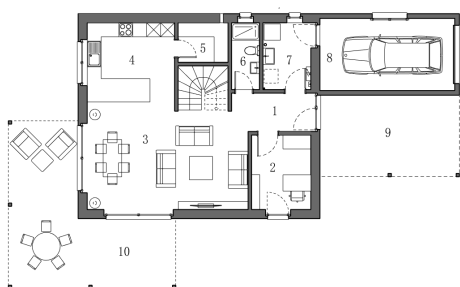
# FINISHING STAGE





# REALIZATION

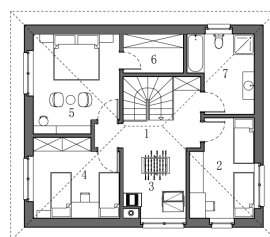
LAURA  
Total in Net Surface: 216.20 m<sup>2</sup>



## GROUND FLOOR

Net area **147.10 m<sup>2</sup>**

1. Hall 5.60 m<sup>2</sup>
2. Office / Room 8.20 m<sup>2</sup>
3. Living room / Dining room 34.30 m<sup>2</sup>
4. Kitchen 12.80 m<sup>2</sup>
5. Food storage 3.70m<sup>2</sup>
6. WC / Shower 3.40 m<sup>2</sup>
7. Service room 5.90 m<sup>2</sup>
8. Garage at 18.00
9. Parking shelter 21.00 m<sup>2</sup>
10. Terrace 34.20 m<sup>2</sup>



## FIRST FLOOR

Net area **69.10m<sup>2</sup>**

1. Hall 7.80 m<sup>2</sup>
2. Room 1 11.40 m<sup>2</sup>
3. Playground 8.40 mW
4. Room 2 12.50 m<sup>2</sup>
5. Room 3 15.60 m<sup>2</sup>
6. Wardrobe 4.50 m<sup>2</sup>
7. Bathroom 8.90 m<sup>2</sup>



# REALIZATION

MELISSA

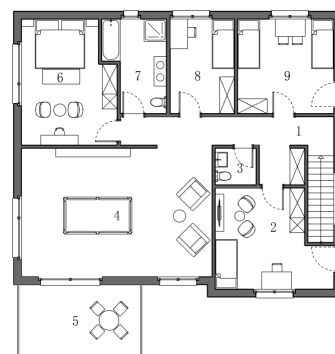
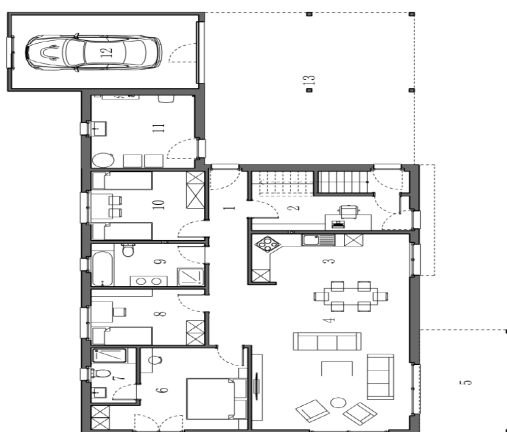
Total in Net Surface: 355.50 m<sup>2</sup>



## GROUND FLOOR

Net area: **221.70 m<sup>2</sup>**

1. Hall 10.90 m<sup>2</sup>
2. Office / Room 11.20 m<sup>2</sup>
3. Kitchen 12.10 m<sup>2</sup>
4. Living room / Desk 37.60 m<sup>2</sup>
5. Terrace 15.00 m<sup>2</sup>
6. Room 15.90 m<sup>2</sup>
7. WC / Shower 4.00 m<sup>2</sup>
8. Room 1 10.20 m<sup>2</sup>
9. Bathroom 7.80 m<sup>2</sup>
10. Room 2 12.60 m<sup>2</sup>
11. Technical room 12.00 m<sup>2</sup>
12. Garage 21.80 m<sup>2</sup>
13. Parking shelter 50.60 m<sup>2</sup>



## FIRST FLOOR

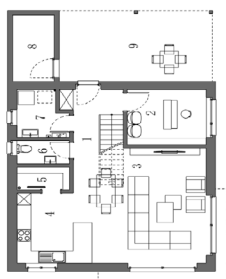
Net area: **133.80 m<sup>2</sup>**

1. Hall 13.20 m<sup>2</sup>
2. Room 3 16.80 m<sup>2</sup>
3. WC 2.40 m<sup>2</sup>
4. Play corner 40.00 m<sup>2</sup>
5. Balcony 15.00 m<sup>2</sup>
6. Room 4 18.20 m<sup>2</sup>
7. Bathroom 8.40 m<sup>2</sup>
8. Room 5 9.90 m<sup>2</sup>
9. Room 6 9.90 m<sup>2</sup>



# REALIZATION

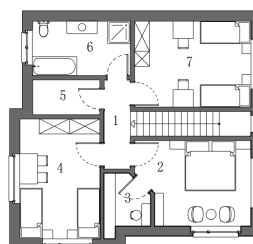
LIZA  
Total in Net Surface: 162.00m<sup>2</sup>



## GROUND FLOOR

Net area: **97.40 m<sup>2</sup>**

1. Hall 6.90 m<sup>2</sup>
2. Room 1 9.40 m<sup>2</sup>
3. Living room / Desk 33.70 m<sup>2</sup>
4. Kitchen 8.40 m<sup>2</sup>
5. Food storage 2.60 m<sup>2</sup>
6. WC 2.70 m<sup>2</sup>
7. Service room 4.70m<sup>2</sup>
8. Workshop 5.90 m<sup>2</sup>
9. Parking shelter 23.10 m<sup>2</sup>



## FIRST FLOOR

Net area: **64.60 m<sup>2</sup>**

1. Hall 3.70 m<sup>2</sup>
2. Parents' room 14.30 m<sup>2</sup>
3. Wardrobe 3.70 m<sup>2</sup>
4. Room 2 15.10 m<sup>2</sup>
5. Wardrobe 3.70 m<sup>2</sup>
6. Bathroom 8.40 m<sup>2</sup>
7. Room 3 15.70 m<sup>2</sup>



# REALIZATION

**DESTINATION:** Odë

**LOCATION:** Milloshevë, Obiliq

**AREA:** 112m<sup>2</sup>





## REALIZATION



**Destination:** Odë  
**Location:** Milloshevë, Obiliq



## CONTACT



### Where are we?

Rozaje street, Radac.  
Peja, Kosovo

If you want to work with us or need assistance with the services we provide, then do not hesitate to contact us.

**+38345445730 \ +41792250176**

**info@greenhouse.immo**

**www.greenhouse.immo**

In Switzerland we are located at:

CH-2822 COURROUX

+41 79 225 0176

